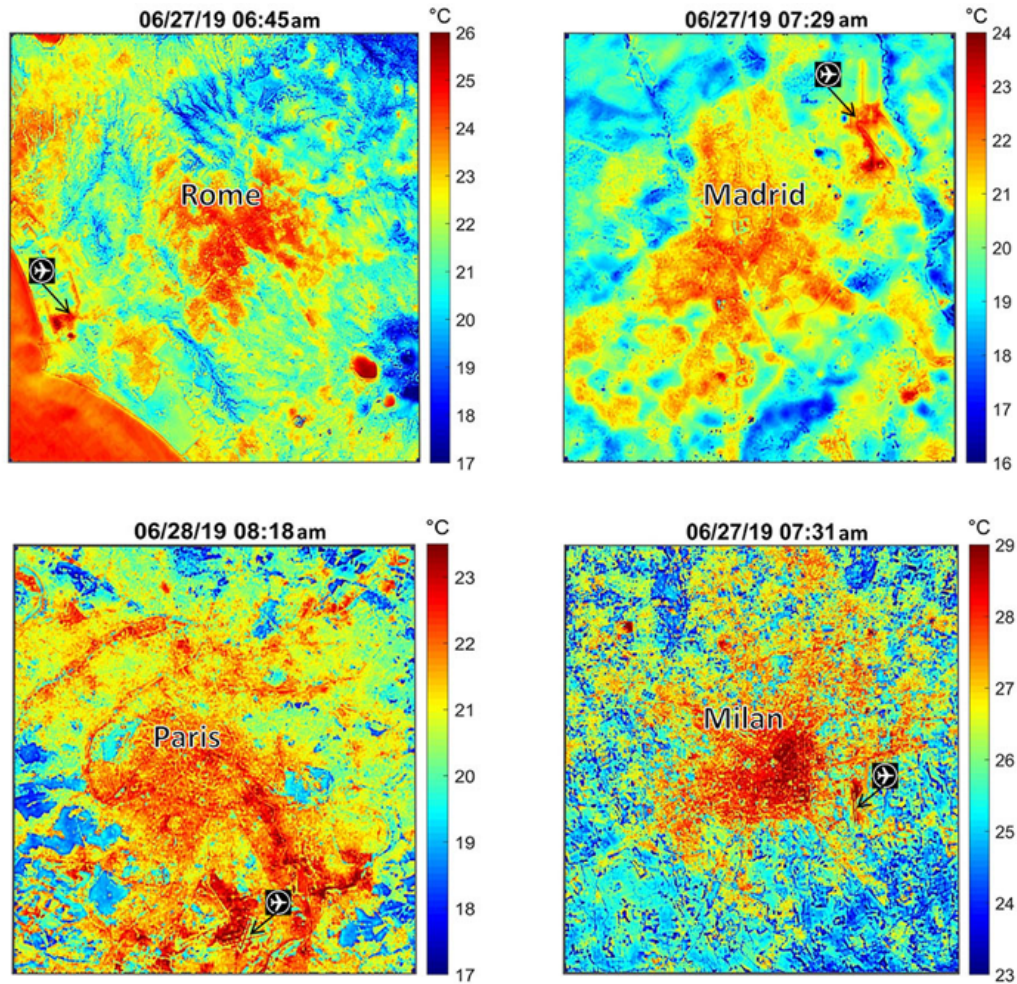


NEWS | JULY 2, 2019

NASA's ECOSTRESS Maps European Heat Wave From Space



These maps of four European cities show ECOSTRESS surface temperature images acquired in the early mornings of June 27 and 28, 2019, during a heatwave. The images have been sharpened to delineate key features such as airports. Airports and city centers are hotter than surrounding regions because they have more surfaces that retain heat (asphalt, concrete, etc.). Credit: NASA/JPL-Caltech

[› Larger view](#)

Europe's massive heat wave is on its way out - and it's leaving a slew of broken temperature records in its wake. Many countries were gripped by temperatures above 104 Fahrenheit (40 degrees Celsius) between June 26 and June 30. According to the World Meteorological Organization, June 2019 is now the hottest month on record for the continent as a whole.

NASA's Ecosystem Spaceborne Thermal Radiometer Experiment on Space Station (ECOSTRESS) measures Earth's surface temperature from the International Space Station at different times of day. Although its primary

Popular

[Robotic Toolkit Added to NASA's Mars 2020 Rover](#)

[NASA Robots Compete Underground in DARPA Challenge](#)

[Space Samples Link NASA's Apollo 11 and Mars 2020](#)

[New Finds for Mars Rover, Seven Years After Landing](#)

['Space Fabric' Links Fashion and Engineering](#)

objective is to monitor the health of plants, ECOSTRESS can also detect heat events such as the one much of Europe just experienced.

ECOSTRESS mapped the surface, or ground temperature, of four European cities - Rome, Paris, Madrid and Milan - during the mornings of June 27 and June 28. In the images, hotter temperatures appear in red and cooler temperatures appear in blue. They show how the central core of each city is much hotter than the surrounding natural landscape due to the urban heat island effect - a result of urban surfaces storing and re-radiating heat throughout the day.

The fact that surface temperatures were as high as 77-86 degrees Fahrenheit (25-30 degrees Celsius) in the early morning indicates that much of the heat from previous days was stored by surfaces with high heat capacity (such as asphalt, concrete and water bodies) and unable to dissipate before the next day. The trapped heat resulted in even higher midday temperatures, in the high 40s (Celsius) in some places, as the heat wave continued.

ECOSTRESS launched to the space station last summer and began collecting its first heat data just days after installation. The instrument measures variations of ground temperatures to within a few tenths of a degree, and it does so with unprecedented detail: It's able to detect temperature changes at various times of day over areas the size of a football field. These measurements help scientists assess plant health and response to water shortages, which can be an indicator of future drought. They can also be used in observing heat trends, spotting wildfires and detecting volcanic activity.

ECOSTRESS provides a wide range of image products for studying the land surface and recently made all these products publicly available through the NASA Land Processes Distributed Active Archive Center (LPDAAC).

JPL built and manages the ECOSTRESS mission for NASA's Earth Science Division in the Science Mission Directorate at NASA Headquarters in Washington. ECOSTRESS is an Earth Venture Instrument mission; the program is managed by NASA's Earth System Science Pathfinder program at NASA's Langley Research Center in Hampton, Virginia.

For more information on ECOSTRESS visit:

<https://ecostress.jpl.nasa.gov>

For more information on Earth science activities aboard the International Space Station, visit:

<http://www.nasa.gov/issearchscience>

News Media Contact

Esprit Smith

Jet Propulsion Laboratory, Pasadena, Calif.

818.354.4269

Esprit.smith@jpl.nasa.gov

2019-134

Site Manager: Jon Nelson

Webmasters: Anil Natha, Luis Espinoza, Tony Greicius